

WGS 84 POSITIONS can be plotted directly on this chart

© Copyright 2018. All rights reserved. No part of this product may be reproduced in any form (including photocopying or by electronic means) without prior permission.

SATELLITE - DERIVED POSITIONS
 Positions obtained from satellite navigation systems, such as the Global Positioning System (GPS), are normally referred to the World Geodetic System 1984 Datum. Such positions can be plotted directly on this chart.

NATIONAL HORIZONTAL DATUM
 Positions read from this chart must be adjusted by 0.02 minutes SOUTHWARD and 0.10 minutes EASTWARD before plotting on documents referred to Ordnance Survey of Great Britain 1936 (OSGB 36 Datum).
 Example:
 Position on chart 53° 36' 50N, 000° 00' 50E
 lat/long adjustments 07.02S 07.10E
 OSGB 36 position 53° 36' 48N, 000° 00' 60E

RIVER HUMBER

Grimsby Middle Shoal

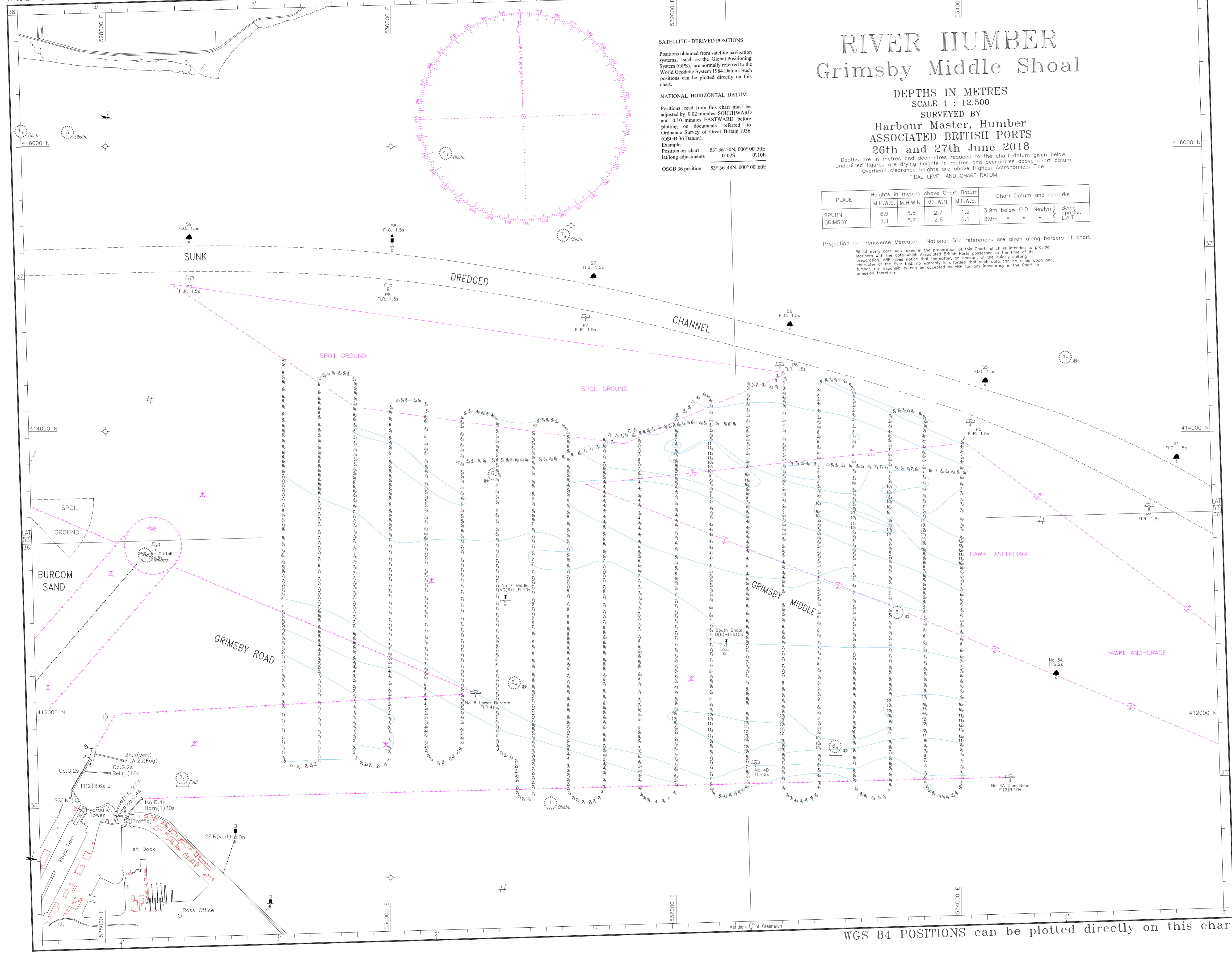
DEPTHS IN METRES
 SCALE 1 : 12,500
 SURVEYED BY
Harbour Master, Humber
ASSOCIATED BRITISH PORTS
 26th and 27th June 2018

Depths are in metres and decimetres reduced to the chart datum given below.
 Underlined figures are drying heights in metres and decimetres above chart datum.
 Overhead clearance heights are above Highest Astronomical Tide
 TIDAL LEVEL AND CHART DATUM

PLACE	Heights in metres above Chart Datum				Chart Datum and remarks
	M.H.W.S.	M.H.W.N.	M.L.W.N.	M.L.W.S.	
SPURN	6.9	5.5	2.7	1.2	3.9m below O.D. Newlyn } Being approx. L.A.T.
GRIMSBY	7.1	5.7	2.6	1.1	

Projection :- Transverse Mercator. National Grid references are given along borders of chart.

Whilst every care was taken in the preparation of this Chart, which is intended to provide Mariners with the data which Associated British Ports possessed at the time of its preparation, ABP gives notice that, insofar as it is possible, on account of the shifting character of the river bed, no warranty is offered that such data can be relied upon and, further, no responsibility can be accepted by ABP for any inaccuracy in the Chart or omission therefrom.



WGS 84 POSITIONS can be plotted directly on this chart